

NEW



Hygiene and Resistance
in a Blink of an Eye





Ideal for applications that require an aesthetic appearance, maximum hygiene and which are exposed to large numbers of people

Glasliner® is a flat and opaque, plastic sheet, available smooth or embossed, made from polyester resins and fibreglass reinforced.

Glasliner® meets the most demanding requirements for covering, protection, and decoration.

Glasliner® is designed to provide maximum hygienic protection, significant savings, easy installation, and excellent durability.

Applications

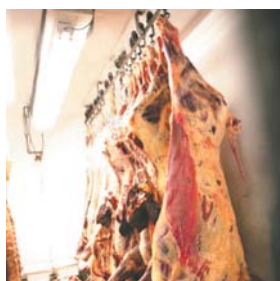
- Food Processors
- Cold Chambers
- Chemical Plants
- Clinics
- Supermarkets
- Restaurants
- Home Use
- Offices
- Schools
- Areas of Heavy Traffic





The Main Advantages of Glasliner®

- Highly resistant
- Easy to clean
- Does not produce fungal growth
- Does not absorb smells
- Easy to install
- Highly Durable
- Flexible
- Thermal stability
- Resistant to corrosion
- Maintains its original colour
- Low maintenance
- Maximum hygienic protection



Specifications



Technical Specifications for 2.3 mm. Glasliner®



	Standard	Value	Unit of measurement
Mechanical properties			
Impact strength	ASTM D-256	180	J/m
Tensile strength	ASTM D-638	314	kg/cm ²
Flexural strength	ASTM D-790	694	kg/cm ²
Linear Expansion	ASTM D-696	0,025	mm/m°C



Chemical properties		
Sulphuric	Acids Concentrated at 15%	No Change
Acetic		No Change
Hydrochloric		No Change
Nitric		No Change
Ammonia	Bases	No Change
Sodium Hydroxide		No Change
Thinner	Solvents	No Change
Petrol		No Change
Acetone		No Change
Alcohol		No Change

Other properties			
Thermal conductivity	D-5261	0,23	W/m ² k

Installation



Cheap and quick installation



The adhesive is applied to the substrate or to the sheet



The sheet is placed on the substrate

Accessories

Glasliner® may be installed and glued to any type of substrate, such as: plasterboard, cement, concrete, tiles, and wood, among others.



OUTER CORNER



INNER CORNER



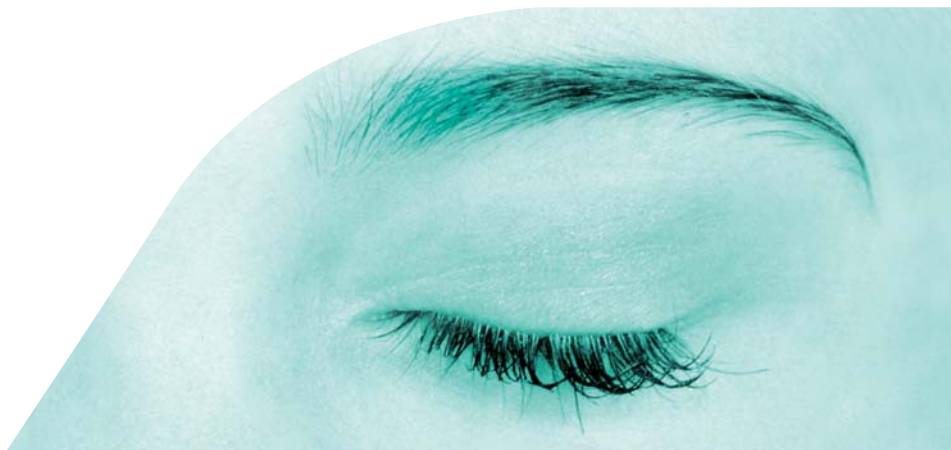
STABILIT ADHESIVE



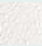

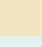
DIVISION BASES



TOP FINISH



● Colour Range

- White 
- Grey 
- Beige 
- Any other colour with a minimum order quantity

● Presentation Range

- Smooth
- Embossed

● Thickness and Dimensions Range

Thickness	1,5 mm. and 2,3 mm.	
Length	Sheet	2,44 m. and 3,05 m.
	Roll	Coil up to 1000 m.
Width	Sheet	1,22 m. and 2,44 m.
	Roll	<2,59 m.

Certifications

- Behavior to the fire in Spain
- Behavior to the fire in France
- Behavior to the fire in Germany
- Behavior to the fire in EE.UU and Canada
- Purity certification
- Behavior certification against fungus and bacteria made in Spain and Germany
- EE.UU department of Agriculture (USDA)
- EE.UU department of Health and Hospitals
- Canadian department of Agriculture
- Mexican Social Security Institute (IMSS)

Glasliner® is manufactured by Stabilit Europa under the ISO 9001 certification requirements



"The information contained in this catalogue is for information purposes only, based on experience and tests carried out by the company; this does not represent any form of responsibility regarding different applications, given that STABILIT EUROPA has not control over end use".



Stabilit Europa, s.l.u.
 Ctra. de Ripollet B-141, km. 3,9 - Poligono Industrial Santiga
 08130 Santa Perpètua de Mogoda (Barcelona) - SPAIN
 Tel n.º: +34 93 729 00 90 - Fax n.º: +34 93 729 06 43
 info@stabiliteuropa.com - www.stabiliteuropa.com

Customer Service
Tel no. +34 902 194 881
Fax no. +34 93 729 06 55 - +34 93 729 13 51

Distributor